



HYCD-282

HYCD-282A

# Combined Refrigerator and Freezer

## Scope of Application

This product is designed to store frozen plasma, biomaterials, vaccines, electronic devices and low temperature tests of special materials, in blood stations, hospitals, epidemic prevention stations, universities, scientific research institutes, electronic chemical industry and other enterprise laboratories.

## Innovative Design

- Self-closing Design
- Intelligent Alarm
- Front USB Port
- Safe and Secure



### Product Advantages



#### Refrigerator & Freezer Combination

Independent control panel display for refrigerator section and freezer section



#### Energy Conservation and Environmental Protection

Frequency conversion compressor and hydrocarbon system, Energy conservation and environmental protection



#### Multiple Alarms

High/low temperature, door ajar, power failure, sensor error, low battery, high ambient temperature and remote alarm

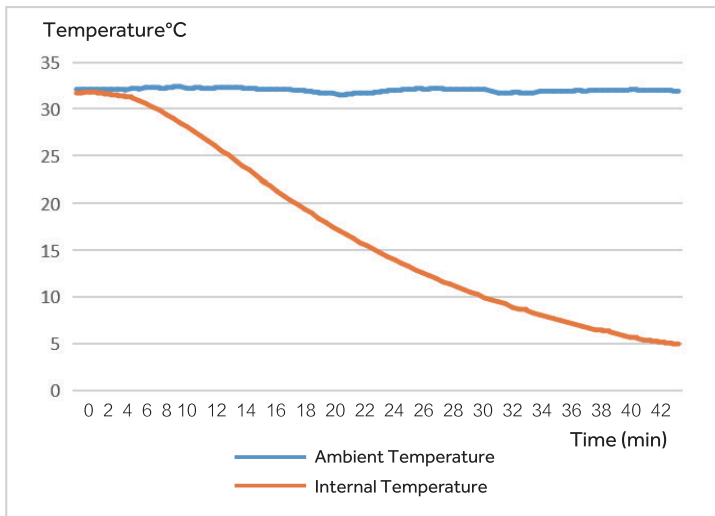


#### High Display Precision

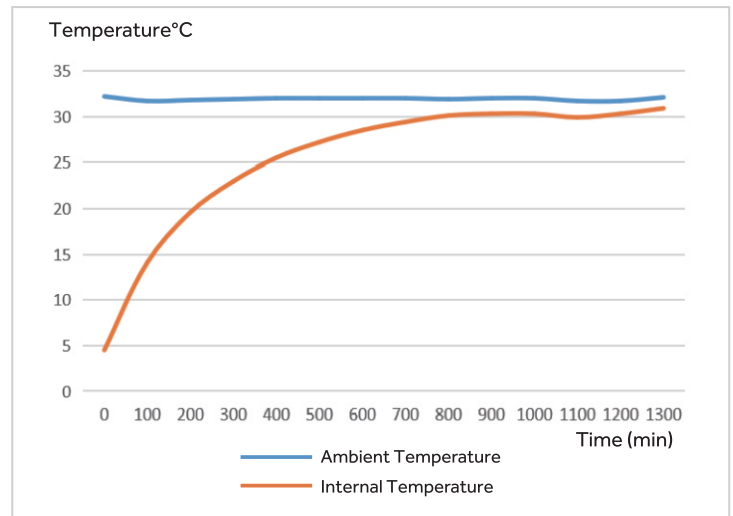
Refrigerator room display precision is 0.1°C

### Product Performance

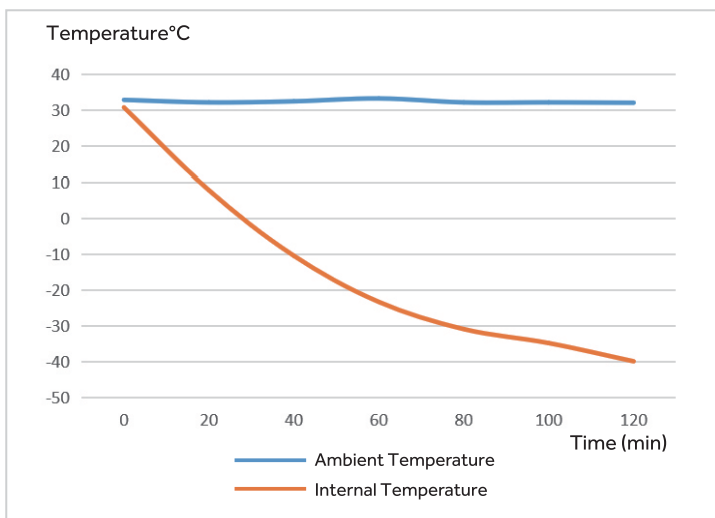
#### Refrigerator Cool Down Curve



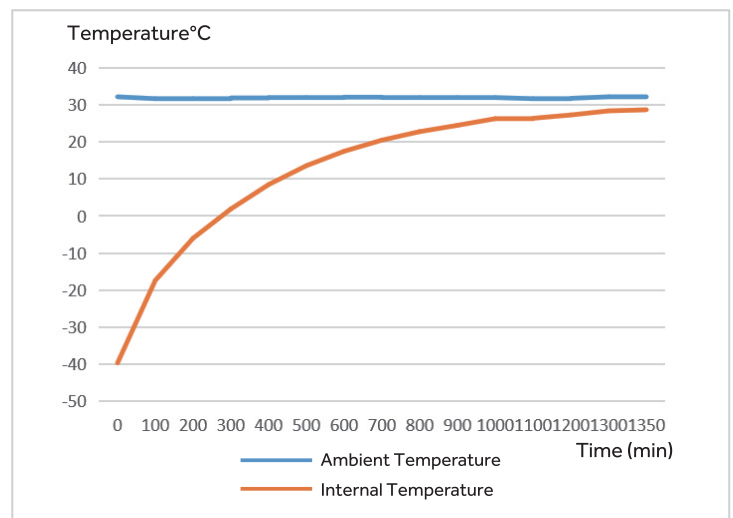
#### Refrigerator Warm Up Curve



#### Freezer Cool Down Curve



#### Freezer Warm Up Curve



### Specifications



Model		HYCD-282	HYCD-282A
Technical Data	Cabinet Type	Upright	Upright
	Climate Class	N	N
	Cooling Type	Refrigerator: Forced air cooling Freezer: Direct cooling	Refrigerator: Forced air cooling Freezer: Direct cooling
	Defrost Mode	Refrigerator: Auto / Freezer: Manual	Refrigerator: Auto / Freezer: Manual
	Refrigerant	Refrigerator: R600a / Freezer: R290	Refrigerator: R600a / Freezer: R290
	Sound Level (dB(A))	43	43
Performance	Temperature Range (°C)	Refrigerator: 2-8 / Freezer: -10~-40	Refrigerator: 2-8 / Freezer: -10~-40
Control	Controller	Microprocessor	Microprocessor
	Display	LED	LED
Electrical Data	Power Supply (V/Hz)	220-240/50/60	220-240/50/60
	Power (W)	410	410
	Electrical Current (A)	2.5	2.5
Dimensions	Capacity (L/Cu.Ft)	Refrigerator: 185/6.5; Freezer: 97/3.4	Refrigerator: 185/6.5; Freezer: 97/3.4
	Net/Gross Weight (approx)	kg	145/160
	Interior Dimensions (W*D*H)	mm	Refrigerator: 605×510×720 Freezer: 515×465×440
	Exterior Dimensions (W*D*H)	mm	735×660×1810
	Packing Dimensions (W*D*H)	mm	775*720*1930
	Container Load (20'/40'/40'H)		21/43/43
Alarms	High/Low Temperature	Y	Y
	Door Ajar	Y	Y
	Remote Alarm	Y	Y
	Power Failure	Y	Y
	Sensor Error	Y	Y
	Low Battery	Y	Y
	High Ambient Temp	Y	Y
Accessories	Caster	Y/4	Y/4
	Foot	Y/2	Y/2
	Porthole	Y/2	Y/2
	Shelves/Drawers	Refrigerator: 3/1; Freezer: 0/2	Refrigerator: 3/1; Freezer: 0/2
	Stylus Printer	Optional	Optional
	USB Interface	Y	Y
Others	Certification	CE	CE
Compressor Type		Frequency Conversion Compressor	Frequency Conversion Compressor
Compressor Quantity		2	2

Marketed by:

**BIOLINE TECHNOLOGIES**

**Sales Office** : 404/405 Shanti dham heights, 90 feet Road  
Parsik Nagar, Kalwa (W), Thane - 400 605, Maharashtra India,  
**Telefax** : +91-22-2545 2111, +91-9594106999  
**Email** : info@bioline.in | **Web** : www.bioline.co.in  
**Branch** : Delhi | Surat | Bangalore | Chennai | Trivandrum